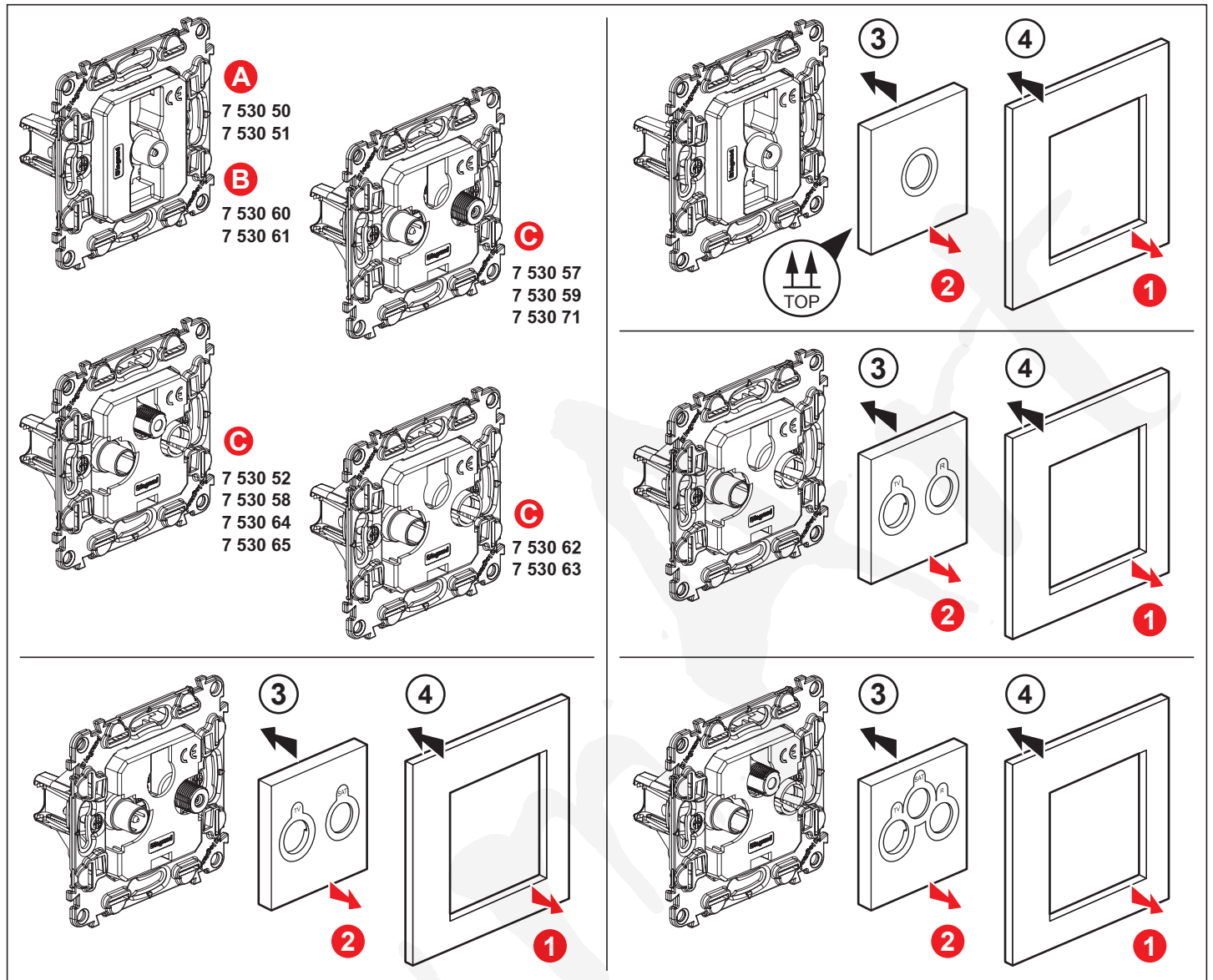


Valena™ INMATIC

7 530 50 / 51 / 52 / 57 / 58 / 59 / 60 / 61 / 62 / 63 / 64 / 65 / 71



A 7 530 50 / 51

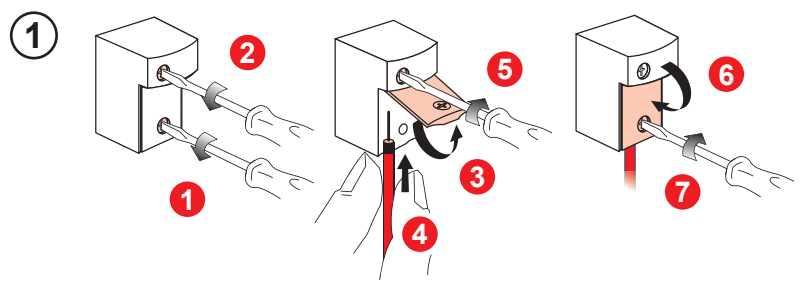
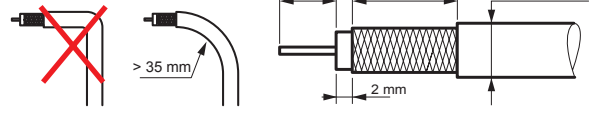
			Control	Return Path	Channel 1	Channel FM	Channel VHF	Channel UHF	Channel SAT (IF)
75 Ω	< 1,5 dB	500 mA	22 kHz 0,6 V	4 - 30 MHz	47 - 68 MHz	87,5 - 108 MHz	120 - 470 MHz	470 - 862 MHz	950 - 2400 MHz

8 mm
5,5 \varnothing <math>< 7</math> mm
17 / 19 VATCA
8 mm

> 35 mm

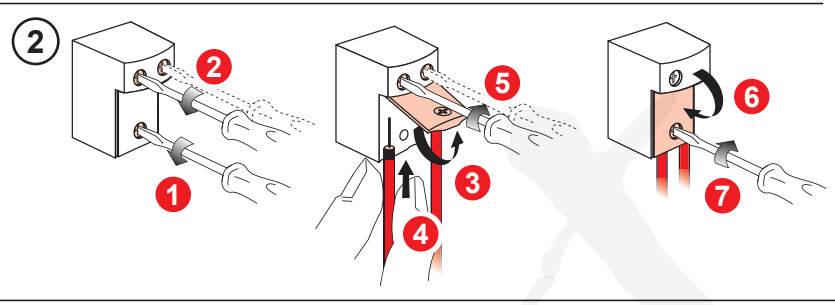
1 **2** **3** **4** **CLIC**

B 7 530 60 / 61

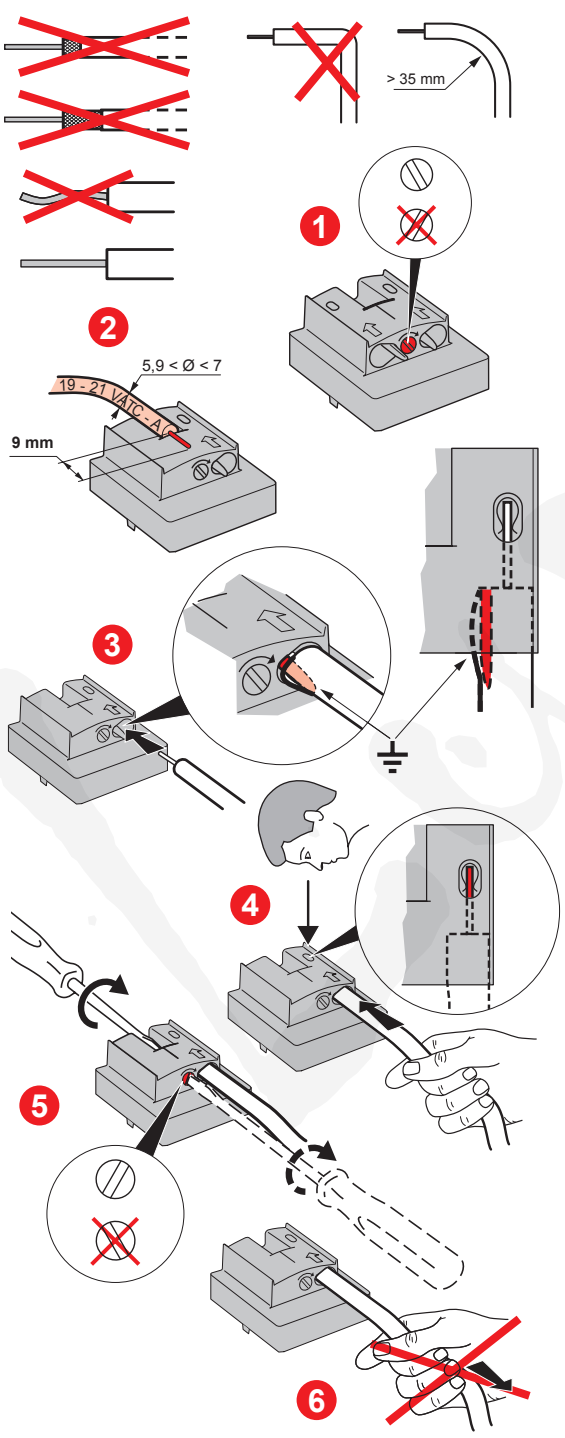


				Control
7 530 60	75 Ω	10 dB	500 mA	—
7 530 61		14 dB		

Return Path	Channel 1	Channel FM	Channel VHF	Channel UHF	Channel SAT (IF)
4 - 30 MHz	47 - 68 MHz	87,5 - 108 MHz	120 - 470 MHz	470 - 862 MHz	950 - 2150 MHz



C 7 530 52 / 57 / 58 / 59 / 62 / 63 / 64 / 65 / 71



Model	Control	Return Path	Channel 1	Channel FM	Channel VHF	Channel UHF	Channel SAT (IF)		
7 530 57	—	—	—	—	—	—	—		
7 530 59	—	—	—	—	—	10 dB	—		
7 530 71	—	—	—	—	1,5 dB	14 dB	14 dB		
7 530 62	—	—	—	—	—	10 dB	—		
7 530 63	—	—	—	—	1,5 dB	14 dB	14 dB		
7 530 52	—	—	—	—	—	—	—		
7 530 58	—	—	—	—	—	—	—		
7 530 64	—	—	—	—	—	10 dB	—		
7 530 65	—	—	—	—	1,5 dB	14 dB	14 dB		
7 530 57	75 Ω	500 mA	22 kHz 0,6 V	4 - 30 MHz	47 - 68 MHz	87,5 - 108 MHz	120 - 470 MHz	470 - 862 MHz	950 - 2400 MHz
7 530 57					1,5 dB			2 dB	
7 530 71					14 dB				
7 530 52 / 58					1,5 dB			2 dB	
7 530 65					14 dB				
7 530 59 / 64					10 dB				
7 530 62					10 dB				
7 530 63					14 dB				